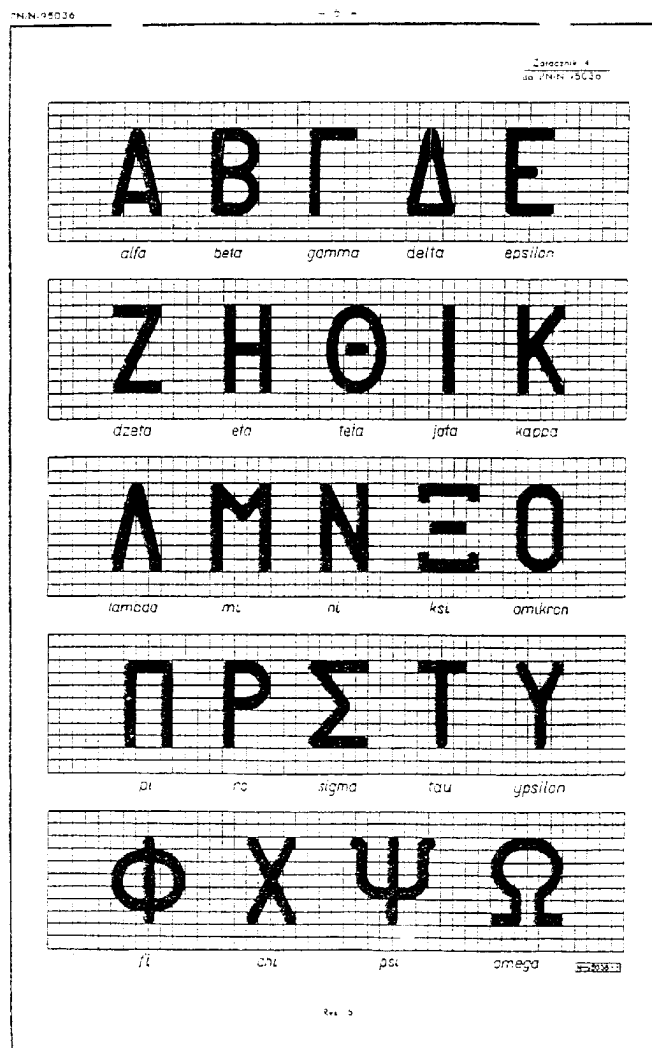
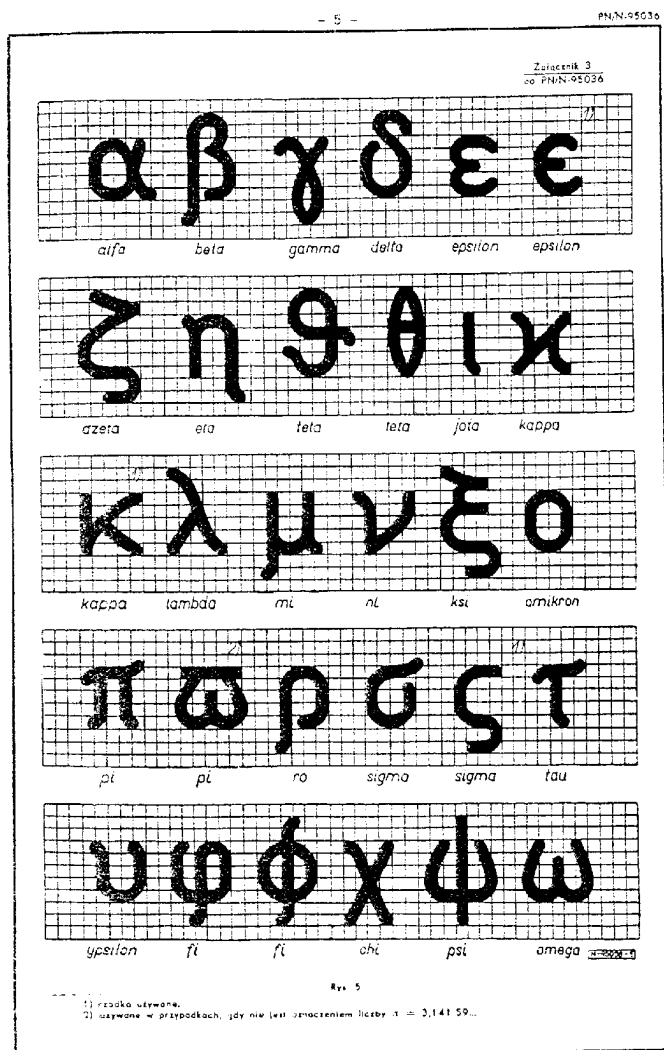


Alfabet grecki

PN/N-95036:



TeX:

alfa: α beta: β gamma: γ Γ delta: δ Δ epsilon: ε ε

dzeta: ζ eta: η teta: θ ϑ Θ jota: ι kappa: κ

lambda: λ Λ mi: μ ni: ν ksi: ξ Ξ omikron: ο

pi: π (ϖ) Π ro: ρ ϱ sigma: σ (ς) Σ tau: τ

ypsilon: υ Υ fi: φ ϕ Φ chi: χ psi: ψ Ψ omega: ω Ω